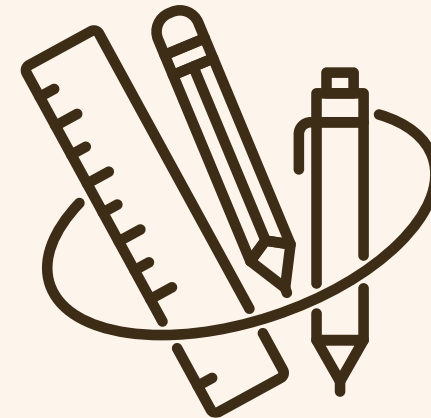
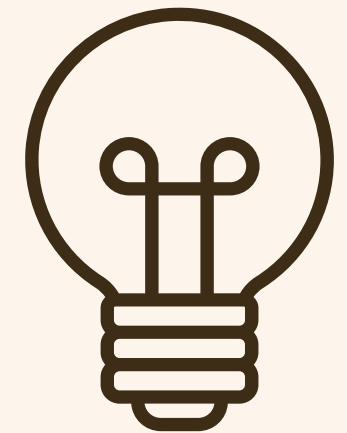
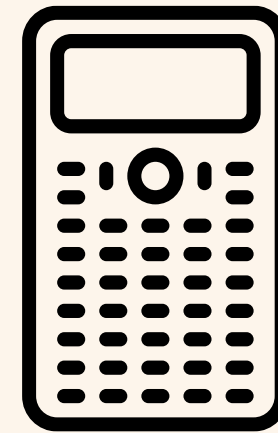


BISAK SIXTH FORM

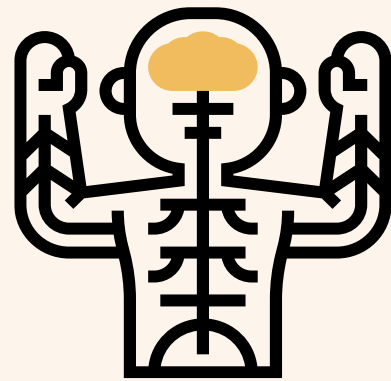
A-LEVEL OPTIONS EVENING

Explore A-level choices and future pathways.



A Holistic approach

At BISA, we believe education is about **MORE** than just exam results. Our holistic approach ensures pupils thrive academically, personally, and socially.



Whole-Person Development

We nurture the mind (academic excellence), body (well-being), and spirit (character & resilience).



Beyond the Classroom

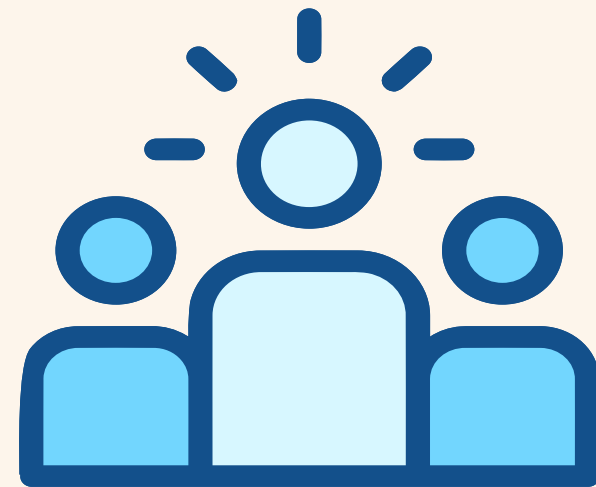
Leadership opportunities, extracurricular activities, and tailored university preparation.



Future-Ready Pupils

Confident, capable young adults prepared for university, careers, and life.

A Holistic approach



Programmes of Support in place

Aspire+

For academic stretch and top-university preparation

Progress+

For personal reflection, goal-setting, and academic progress tracking

Navigate+

For career readiness, personal statements, and University planning

What makes our sixth form unique?

Small class sizes & personalised support

University preparation & career guidance

Volunteering opportunities



Leadership roles & student councils

Strong academic & extracurricular balance

Academic support programmes: Progress +, Navigate +, Aspire +

A-level options 2026-2028

- Wide range of subjects available
- Facilitating subjects for university applications
- Choosing subjects that match interests & career goals

BTEC Business

Art

Biology

IAL Business

Chemistry

English Language &
Literature

Physics

Geography

History

Mathematics

Politics

Psychology

BTEC Level 3 Business (New)

Equivalent to A Levels

- 1 AS Level = 180 Guided learning hours.
- 1 A Level = 360 Guided learning hours

Course Structure

- No final exams
- Coursework-based with 1 controlled assessment (externally checked)
- Units studied across business themes (real-world focus)

How You Will Learn

- Independent study + strong time management
- Coursework, projects, and investigations
- Group work and practical tasks
- Links to real businesses and industry



Why Choose BTEC?

- Career-focused and skills-based qualification
- Develops transferable skills (research, teamwork, organisation)
- Accepted by many universities (always check requirements)
- Can be combined with A Levels

Assessment & Grades

- Pass (P), Merit (M), Distinction (D), Distinction* (A* equivalent)

Our Support in Your University Journey

University application process & key deadlines

Choosing the right university & course

Writing a strong personal statement

Guidance available for international applications (US, Canada, Europe, Middle East)

Organise talks from universities and recommend roadshows



When applying to UK universities, pupils will usually go through UCAS. This is a relatively straight forward application process, but it has deadlines that pupils need to be aware of:

- Medicine/Oxbridge – October 15th
- General application – January 29th (equal consideration)

Common App is used for applications to the U.S.

Deadlines vary for different universities and some universities in the U.S. require you to apply directly.

So, it is important to check with each university as to their application process and requirements.

Sixth form Requirements

The minimum entry requirement for Sixth Form is five Grade 5s or above at GCSE or IGCSE. Pupils **MUST** achieve at least a Grade 6 in Mathematics and in the Sciences (Physics, Chemistry and Biology) to study these subjects at A Level.

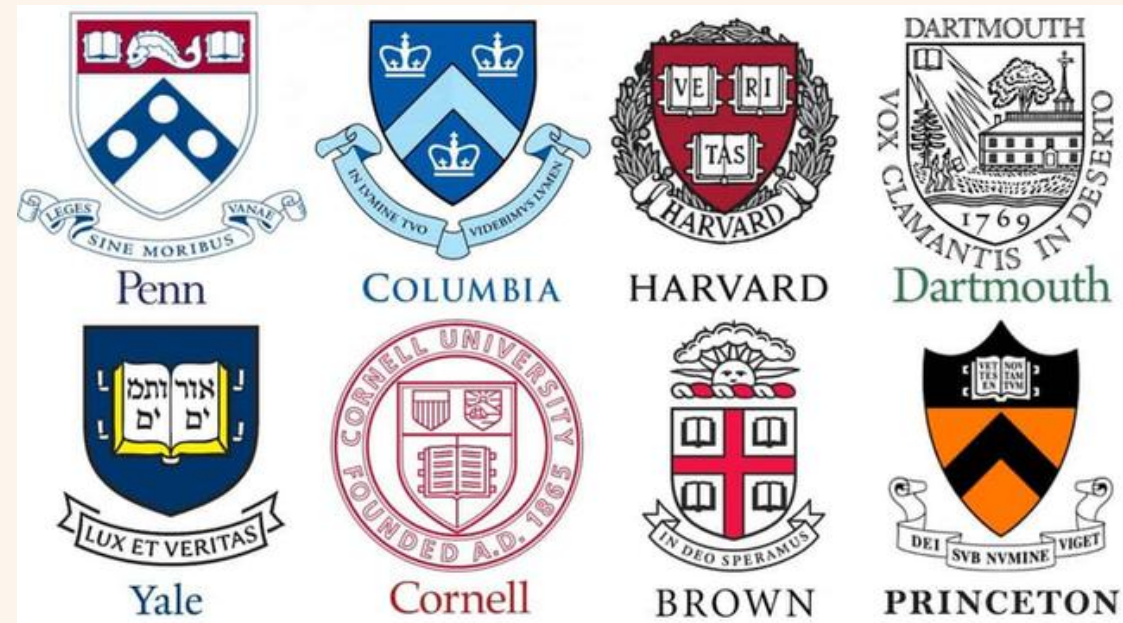
This requirement is non-negotiable.

- Pupils who do not achieve a Grade 6 in Mathematics or in any of the Sciences will NOT be permitted to study that subject at A Level under any circumstances.
- Pupils wishing to study **Physics, Chemistry & Biology at A Level** will be required to sit an **entry assessment in September**. Pupils will have one opportunity to resit this assessment. Failure to meet the required standard will result in the pupil being unable to continue with Physics, Chemistry or Biology at A Level.



What we expect from you

Your Path to University: Key Steps for Success



Which university?

There is a myriad of universities to choose from around the world. All have their own specialties and application processes.

Research!

1

Time spent researching the best fit is incredibly valuable.

Communicate

2

Contact universities individually through the university website to see if it is the right place, the right course and the best fit.

Personal statements

3

What can be done to help make them shine? What can be said to make a candidate attractive to a university? We offer help, support and guidance with the writing of these.

Russell Group Universities





Medical Student/Oxbridge Candidates



Applications for medical schools and Oxbridge close on **October 15th.**

Year 12 is the ideal time to begin preparing. Ensure references and personal statements are completed well in advance.

Check which admission tests are required—BMAT or UCAT, and find the nearest test centre. Book your test early to complete it in plenty of time.

Sixth form Support



Mr Husher

Head of Sixth Form

ryanhusher@bisak.org



Miss Berouijel

Assistant Head of Sixth Form

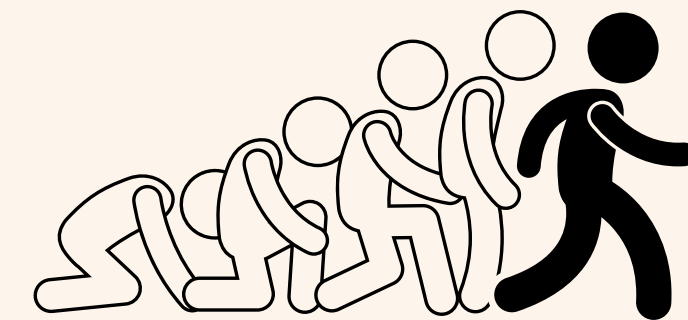
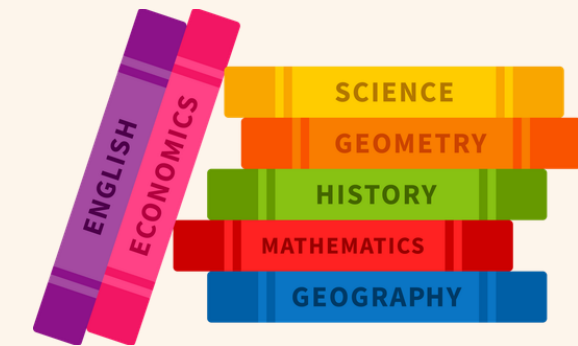
zohraberouijel@bisak.org

Mr Yafai

Careers guidance counsellor

Thank you & next steps:

- Visit Alevel subjects for more insights.
- Speak to Sixth Form staff for further guidance
- Speak to our Career Lead – Mr Yafai for further guidance on subject choices.





Information about GCSE Exams June 2025 Exam Series

BISAK



Exam Dates

GCSE/IGCSE Written Exams:

- 8th May to 18th June 2025

PE Practical Exams / Languages Oral Exams / Art Personal Portfolios:

- Have already started or about to start

Contingency Day:

- 25th June 2025

Exam Timetable

- The Exam Timetable will be updated and shared with students by email
- The Exam Timetable will be updated and posted weekly on the BISAK website when the exams start
- Check the Exam Timetables carefully for scheduled start and end times. Candidates doing the same subject exam can have different exam times due to exam clashes

Exam Days

- **On the day a candidate has exams they have to get to school at least half an hour before the scheduled start of the exam**
- **Please make appropriate arrangements for a prompt pick-up after the exam, especially for out-of-school-hours and weekend exams**

Result Days

The results will be accessed electronically

- Pearson/Edexcel
- GCE/IAL A Levels: 14th August 2025
- GCSE/IGCSE: 21st August 2025

Results will be available on ResultsPlus

- Cambridge (Sociology)
- A Levels: 12th August 2025
- IGCSE: 19th August 2025

Results will be available on myresults.cie.org.uk

- 
- **Thank you very much and good luck to all candidates in their exams**

- 
- **Any questions?**